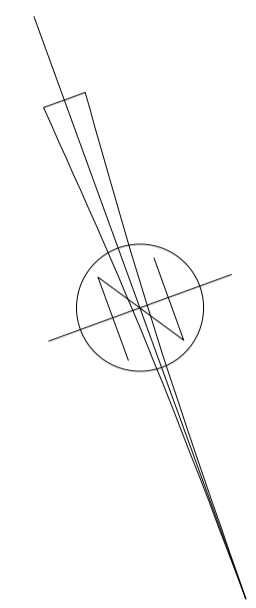
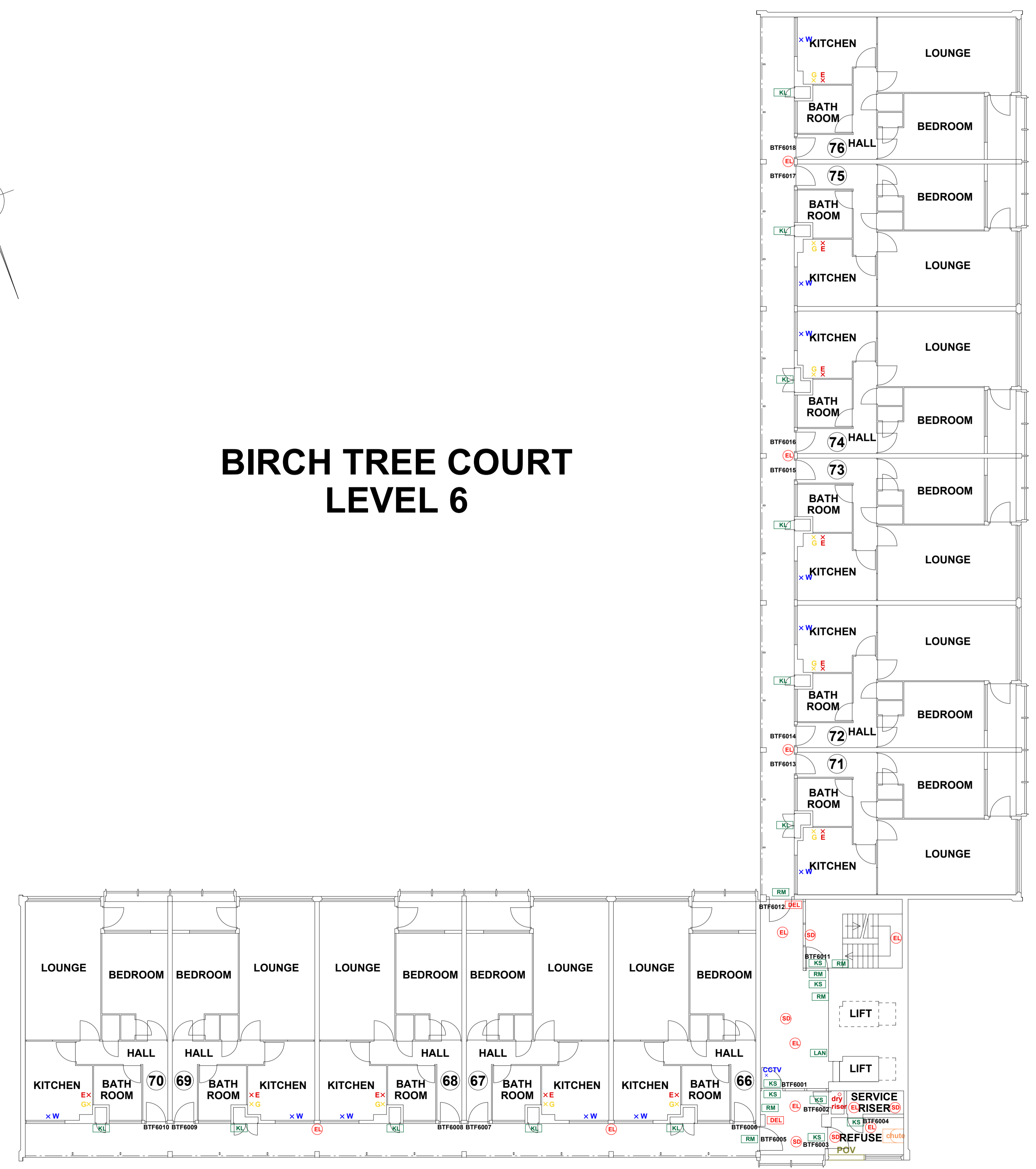


THIS DRAWING IS TO BE READ IN CONJUNCTION WITH ALL RELEVANT SPECIFICATIONS AND DRAWINGS ISSUED. THIS DRAWING IS CORRECT AT TIME OF SURVEY

© COPYRIGHT FIRNTEC LTD 2022



BIRCH TREE COURT LEVEL 6



- FIRE PRECAUTIONS LEGEND**
- ⊙ Break glass type fire alarm call point
 - ⊙ Heat sensitive detectors
 - ⊙ Smoke sensitive detectors
 - ⊙ Emergency light point.
 - ⊙ Firemans Switch
 - ⊙ Emergency Drop Key Access
 - ⊙ Fire alarm indicator / repeat panel
 - ⊙ Door/Access fitted with Gerda D1 Key lock
 - ⊙ Door/Access fitted with FB1 Key lock
 - ⊙ Door/Access fitted with FB2 Key lock
 - ⊙ Door/Access fitted with FB4 Key lock
 - ⊙ Door/Access fitted with FB11 Padlock
 - ⊙ Door/Access fitted with FB14 Padlock
 - ⊙ Dry Riser Outlet
 - ⊙ Digital electronic lock door entry/exit system
 - ⊙ Premises Information Box
 - ⊙ Permanently Open Vent
 - ⊙ Automatic Opening Vent
 - ⊙ Openable Vent
 - ⊙ Fire alarm sounder ('X' indicates integral flashing - Xenon light)
 - ⊙ CCTV Security Camera
 - ⊙ Fire Brigade Key Access
 - EXTINGUISH**
 - ⊙ 1.1m x 1.1m fire blanket - base of container to be 1500mm above floor level
 - ⊙ 6 litres AFFF aqueous foam extinguisher to BS:6575
 - ⊙ 9 litre wet chemical type extinguisher
 - ⊙ 4.5 litre dry powder type extinguisher
 - ⊙ 2 kg carbon dioxide type extinguisher
 - ⊙ 4.5 kg carbon dioxide type extinguisher
 - ⊙ 9 kg water type extinguisher
 - ⊙ 6 litre water type extinguisher
 - FIRE EXIT SIGNAGE**
 - ⊙ 'E' Signs to be externally illuminated by adjacent emergency light point
 - ⊙ 'FE' denotes as previous but illuminated as part of sign
 - ⊙ 'RM' denotes non illuminated sign
 - FIRE DOOR SIGNS AND FIRE ACTION NOTICES**
 - ⊙ Fire Action Notice
 - ⊙ Emergency Floor Plan
 - ⊙ "FIRE DOOR KEEP SHUT" sign
 - ⊙ "FIRE DOOR KEEP LOCKED" sign
 - ⊙ "AUTOMATIC FIRE DOOR KEEP CLEAR" or "FIRE EXIT KEEP CLEAR" sign
 - ⊙ "CAUTION, IN THE EVENT OF FIRE DO NOT USE THIS LIFT"
 - ⊙ DISTRIBUTION BOARD



REV	DATE	AMENDMENTS

WEB: WWW.FIRNTEC.COM
 EMAIL: CONTACTUS@FIRNTEC.COM
 ADDRESS: 1ST FLOOR, ENDEAVOUR HOUSE, PARKWAY CT, PLYMOUTH PL6 8LX
 TEL: 01752 977 147

PROJECT: **BIRCH TREE COURT**
 ADDRESS: BIRCH TREE COURT
 WYTHENSHAW
 MANCHESTER
 M22 3RY

DWG NO.: BTC_220020L07
 DWG TITLE: LEVEL 6
 DWG DATE: NOVEMBER 2022
 DWG SIZE: SCALE 1:100 @ A1
 DRAWN: NR | CHECKED: BR | ISS4