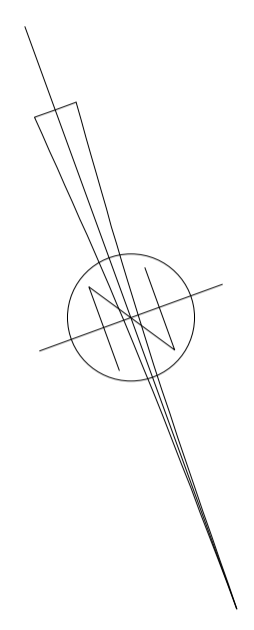
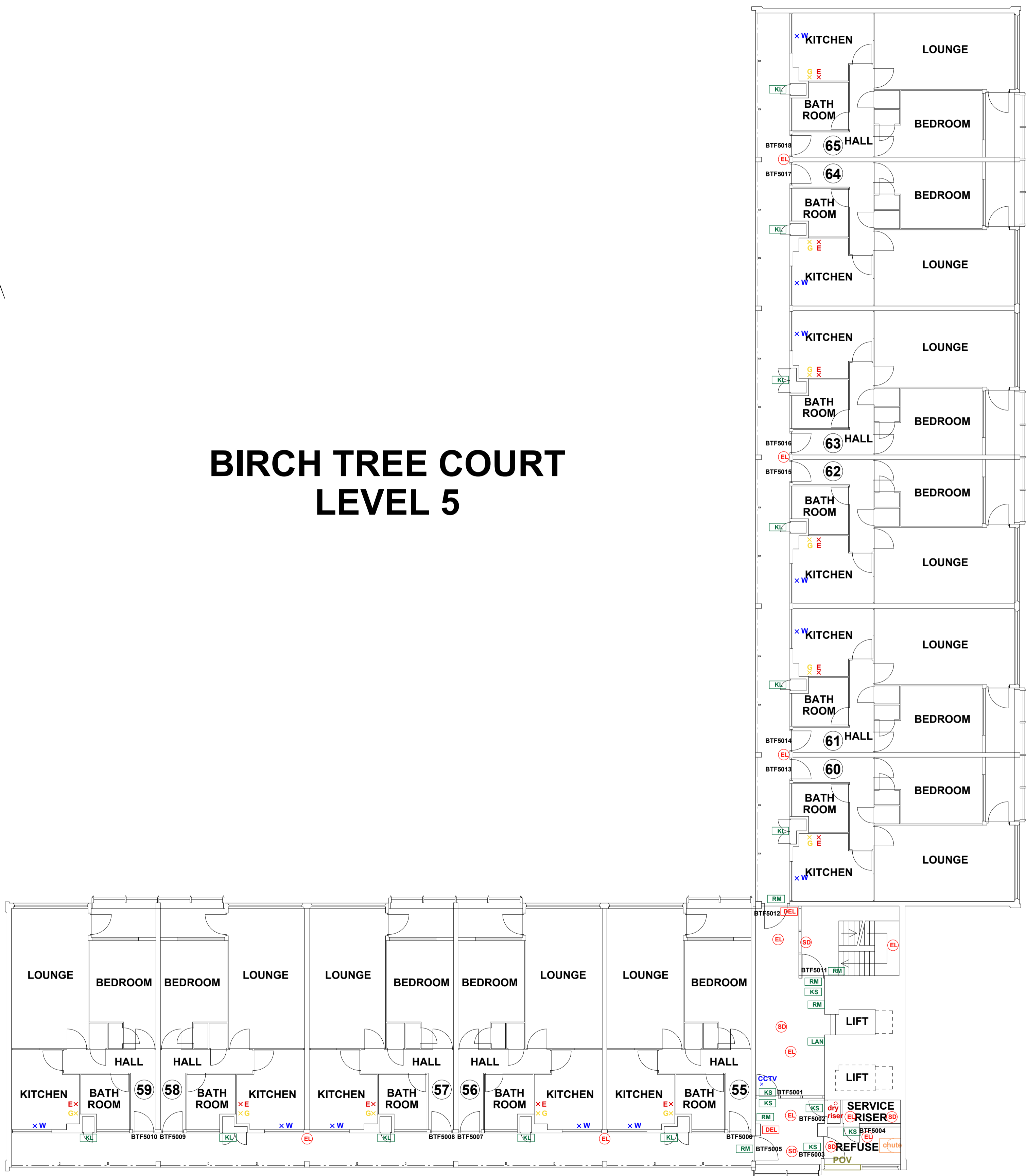


THIS DRAWING IS TO BE READ IN CONJUNCTION WITH ALL RELEVANT SPECIFICATIONS AND DRAWINGS ISSUED. THIS DRAWING IS CORRECT AT TIME OF SURVEY

© COPYRIGHT FIRNTEC LTD 2022



# BIRCH TREE COURT LEVEL 5



- FIRE PRECAUTIONS LEGEND**
- ⊙ Break glass type fire alarm call point
  - HD Heat sensitive detectors
  - SD Smoke sensitive detectors
  - EL Emergency light point.
  - FS Firemans Switch
  - DKA Emergency Drop Key Access
  - FAP Fire alarm indicator / repeat panel
  - GD1 Door/Access fitted with Gerda D1 Key lock
  - FB1 Door/Access fitted with FB1 Key lock
  - FB2 Door/Access fitted with FB2 Key lock
  - FB4 Door/Access fitted with FB4 Key lock
  - FB11P Door/Access fitted with FB11 Padlock
  - FB14P Door/Access fitted with FB14 Padlock
  - DRO Dry Riser Outlet
  - DEL Digital electronic lock door entry/exit system
  - PIB Premises Information Box
  - POV Permanently Open Vent
  - AOV Automatic Opening Vent
  - OV Openable Vent
  - /- Fire alarm sounder ('X' indicates integral flashing - Xenon light)
  - CCTV CCTV Security Camera
  - FB Fire Brigade Key Access
- EXTINGUISH**
- BLNRT 1.1m x 1.1m fire blanket - base of container to be 1500mm above floor level
  - A/F 6 litres AFFF aqueous foam extinguisher to BS:6575
  - C/P 9 litre wet chemical type extinguisher
  - D/P 4.5 litre dry powder type extinguisher
  - C/C 2 kg carbon dioxide type extinguisher
  - C/C 4.5 kg carbon dioxide type extinguisher
  - W/P 9 kg water type extinguisher
  - W/P 6 litre water type extinguisher
- FIRE EXIT SIGNAGE**
- E 'E' Signs to be externally illuminated by adjacent emergency light point
  - FE 'FE' denotes as previous but illuminated as part of sign
  - RM 'RM' denotes non illuminated sign
- FIRE DOOR SIGNS AND FIRE ACTION NOTICES**
- FAN Fire Action Notice
  - EFP Emergency Floor Plan
  - KS "FIRE DOOR KEEP SHUT" sign
  - KL "FIRE DOOR KEEP LOCKED" sign
  - KC "AUTOMATIC FIRE DOOR KEEP CLEAR" or "FIRE EXIT KEEP CLEAR" sign
  - LAN "CAUTION, IN THE EVENT OF FIRE DO NOT USE THIS LIFT"
  - DB DISTRIBUTION BOARD



REV	DATE	AMENDMENTS

WEB: WWW.FIRNTEC.COM  
 EMAIL: CONTACTUS@FIRNTEC.COM  
 ADDRESS: 1ST FLOOR, ENDEAVOUR HOUSE, PARKWAY CT, PLYMOUTH PL6 8LR  
 TEL: 01752 977 147

**PROJECT: BIRCH TREE COURT**  
 ADDRESS: BIRCH TREE COURT  
 WYTHENSHAW  
 MANCHESTER  
 M22 3RY  
 DWG NO.: BTC\_220020L06  
 DWG TITLE: LEVEL 5  
 DWG DATE: NOVEMBER 2022  
 DWG SIZE: SCALE 1:100 @ A1  
 DRAWN: NR | CHECKED: BR | ISSU: