

GROUND FLOOR

0 1 2 4 6 8 10



Scale Bar (Metres)

General Notes

Public areas were surveyed in the building.
Access to all the flats was not possible.

Footprint shown is assumed, the areas not surveyed cannot
be relied upon unless checked onsite for accuracy.

Plans are for illustration purposes only and should not be
relied upon for any works carried out or for area calculation
or building works.

Key:

- FIRE DOOR SIGNS AND FIRE ACTION NOTICES**
- [FAN]** Fire Action Notice
- [KS]** "FIRE DOOR KEEP SHUT" sign
- [KL]** "FIRE DOOR KEEP LOCKED" sign
- [KC]** "AUTOMATIC FIRE DOOR KEEP CLEAR" or
"FIRE EXIT KEEP CLEAR" sign.
- [LAN]** "CAUTION, IN THE EVENT OF
FIRE DO NOT USE THIS LIFT"
- FIRE PRECAUTIONS LEGEND**
- [O]** Break glass type fire alarm call point.
- [HD]** Point type heat sensitive detectors.
- [SD]** Smoke sensitive detectors.
- [SDR]** Smoke detectors in roof space.
- [FLS]** Flashing Strobe indicator.
- [FAP]** Fire alarm indicator / repeat panel.
- [HOP]** Electromagnetic hold open devices
- [FD20]** 20 minute Fire resistant door (FD20).
- [FED]** Fire resistant flat entrance door.
- [FD30S]** Self-closing half-hour fire resisting door. (FD30S).
- [FD60S]** Self-closing one hour fire resisting. (FD60S).
- [AOV]** Doors activated by the fire alarm system or in
the event of power failure to work as Automatic Opening vent
- [DEL]** Digital electronic lock door entry/exit system
- [GH13]** Door/Access fitted with Gerda H13 Key lock.
- [GH36]** Door/Access fitted with Gerda H36 Key lock.
- [S]** Fire alarm sounder. ('X' indicates integral flashing Xenon light.)
- [EL]** Emergency light point.
- FIRE EXIT SIGNAGE**
- [E]** 'E' Signs to be externally illuminated by emergency light point.
- [FE]** 'FE' denotes as previous but illuminated as part of sign.
- [RM]** 'RM' denotes non illuminated sign
- [B]** 1.1m x 1.1m fire blankets.
Base of fire blanket container to be 1500mm above floor level.
- [AF6]** 6 litres AFFF aqueous foam extinguisher to BS:6575
- [C6]** 9 litre wet chemical type extinguisher.
- [DP4.5]** 4.5 litre dry powder type extinguisher.
- [CO2 4.5]** 4.5 kg carbon dioxide type extinguisher.
- [W9]** 9 kg water type extinguisher.
- [FS]** Firemans Switch
- [DKA]** Emergency Drop Key Access
- Compartment Walls**
- [SVC]** Smoke Vent control panel
- [POV]** Permanently Open Vent
- [PIB]** Premises Information Box
- CCTV** CCTV Security Camera
- [AOV]** Automatic Opening Vent
- [A]** AOV Override Switch
- [SPP]** Sprinkler Control Panel
- [FL]** Firemans Lift
- [SSV]** Sprinkler Stop Valve



Firntec Building Compliance | www.firntec.com | info@firntec.com | 01752 977 147
1st Floor, Endeavour House, 3 Parkway Court, Plymouth, PL6 8LR

Project Address

WEST VIEW COURT
WEST VIEW ROAD
NORTHENDEN
M22 4LQ

Client:

WYTHENSHAW COMMUNITY HOUSING GROUP

Scale:

1:100 @ A1

Date:

JAN 2023

Drawn by:

NR

Checked by:

NR

Drawing Title:

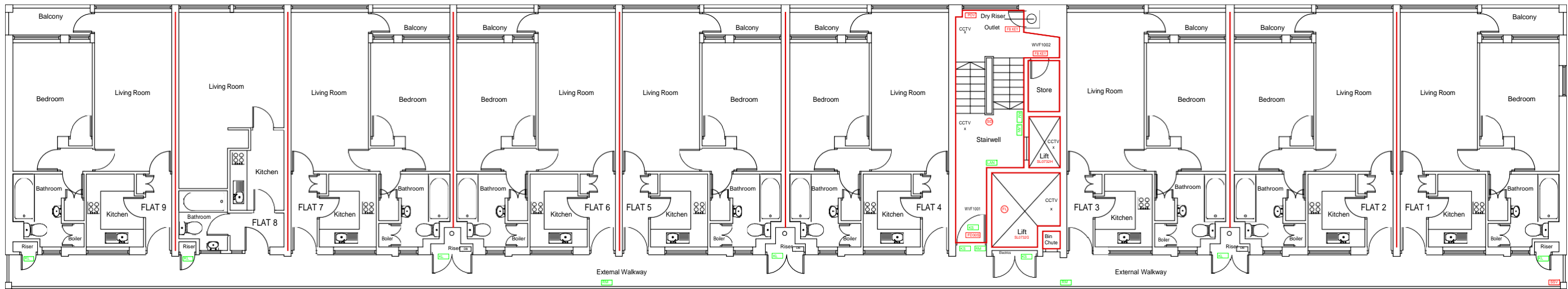
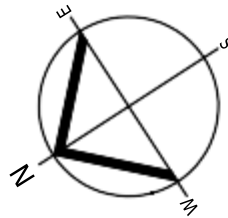
GROUND FLOOR PLAN

Drawing No:

101 / 01 / 23

Revision

A



FIRST FLOOR



Scale Bar (Metres)

General Notes

Public areas were surveyed in the building.
Access to all the flats was not possible.

Footprint shown is assumed, the areas not surveyed cannot
be relied upon unless checked onsite for accuracy.

Plans are for illustration purposes only and should not be
relied upon for any works carried out or for area calculation
or building works.

Key:

- FIRE DOOR SIGNS AND FIRE ACTION NOTICES**
- FAN** Fire Action Notice
 - KS** "FIRE DOOR KEEP SHUT" sign
 - KL** "FIRE DOOR KEEP LOCKED" sign
 - KC** "AUTOMATIC FIRE DOOR KEEP CLEAR" or "FIRE EXIT KEEP CLEAR" sign.
 - LAN** "CAUTION, IN THE EVENT OF FIRE DO NOT USE THIS LIFT"
- FIRE PRECAUTIONS LEGEND**
- Break glass type fire alarm call point.
 - HD** Point type heat sensitive detectors.
 - SD** Smoke sensitive detectors.
 - SDR** Smoke detectors in roof space.
 - SDR** Flashing Strobe indicator.
 - FAP** Fire alarm indicator / repeat panel.
 - Electromagnetic hold open devices
 - FD20** 20 minute Fire resistant door (FD20).
 - FED** Fire resistant flat entrance door.
 - FD30S** Self-closing half-hour fire resisting door. (FD30S).
 - FD60S** Self-closing one hour fire resisting. (FD60S).
 - AOV** Doors activated by the fire alarm system or in the event of power failure to work as Automatic Opening vent
 - DEL** Digital electronic lock door entry/exit system
 - GH13** Door/Access fitted with Gerda H13 Key lock.
 - GH38** Door/Access fitted with Gerda H38 Key lock.
 - FL** Fire alarm sounder. ('X' indicates integral flashing Xenon light.)
 - EL** Emergency light point.
 - FIRE EXIT SIGNAGE**
 - E** Signs to be externally illuminated by emergency light point.
 - FE** 'FE' denotes as previous but illuminated as part of sign.
 - RM** 'RM' denotes non illuminated sign
 - B** 1.1m x 1.1m fire blankets.
 - AF6** Base of fire blanket container to be 1500mm above floor level.
 - AF6** 6 litres AFFF aqueous foam extinguisher to BS:6575
 - CP9** 9 litre wet chemical type extinguisher.
 - DP4.5** 4.5 litre dry powder type extinguisher.
 - CD4.5** 4.5 kg carbon dioxide type extinguisher.
 - WP9** 9 kg water type extinguisher.
 - FS** Firemans Switch
 - DKA** Emergency Drop Key Access
 - Compartment Walls**
 - SVC** Smoke Vent control panel
 - POV** Permanently Open Vent
 - PIB** Premises Information Box
 - CCTV** CCTV Security Camera
 - AOV** Automatic Opening Vent
 - AOV** AOV Override Switch
 - SPP** Sprinkler Control Panel
 - FL** Firefighters Lift
 - SSV** Sprinkler Stop Valve



Firntec Building Compliance | www.firntec.com | info@firntec.com | 01752 977 147
1st Floor, Endeavour House, 3 Parkway Court, Plymouth, PL6 8LR

Project Address

WEST VIEW COURT
WEST VIEW ROAD
NORTHENDEN
M22 4LQ

Client:

WYTHENSHAW COMMUNITY HOUSING GROUP

Scale:

1:100 @ A1

Date:

JAN 2023

Drawn by:

NR

Checked by:

NR

Drawing Title:

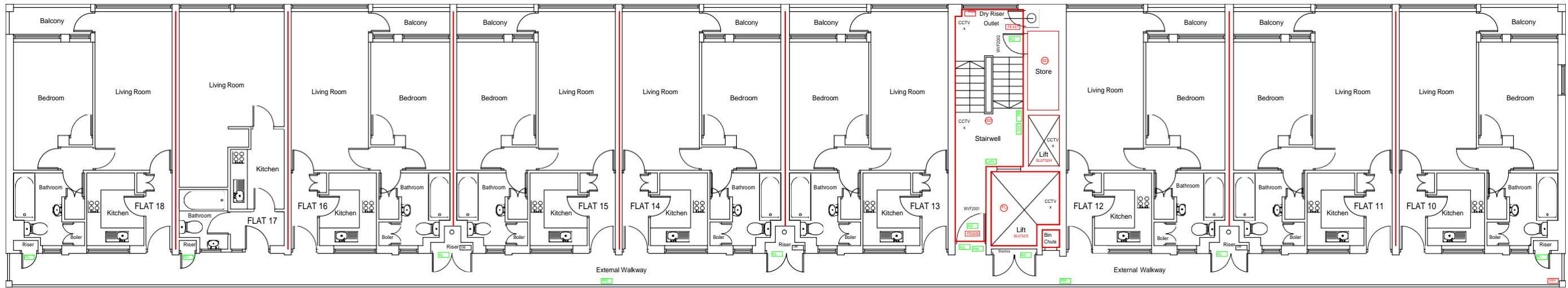
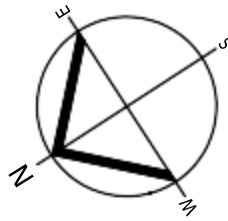
FIRST FLOOR PLAN

Drawing No:

102 / 01 / 23

Revision

A



SECOND FLOOR



Scale Bar (Metres)

General Notes

Public areas were surveyed in the building.
Access to all the flats was not possible.

Footprint shown is assumed, the areas not surveyed cannot
be relied upon unless checked onsite for accuracy.

Plans are for illustration purposes only and should not be
relied upon for any works carried out or for area calculation
or building works.

Key:

- FIRE DOOR SIGNS AND FIRE ACTION NOTICES**
- FAN** Fire Action Notice
 - KS** "FIRE DOOR KEEP SHUT" sign
 - KL** "FIRE DOOR KEEP LOCKED" sign
 - KC** "AUTOMATIC FIRE DOOR KEEP CLEAR" or "FIRE EXIT KEEP CLEAR" sign.
 - LAN** "CAUTION, IN THE EVENT OF FIRE DO NOT USE THIS LIFT"
- FIRE PRECAUTIONS LEGEND**
- BD** Break glass type fire alarm call point.
 - HD** Point type heat sensitive detectors.
 - SD** Smoke sensitive detectors.
 - SDR** Smoke detectors in roof space.
 - SDI** Flashing Strobe indicator.
 - FAP** Fire alarm indicator / repeat panel.
 - HO** Electromagnetic hold open devices
 - FD20** 20 minute Fire resistant door (FD20).
 - FED** Fire resistant flat entrance door.
 - FD30S** Self-closing half-hour fire resisting door. (FD30S).
 - FD60S** Self-closing one hour fire resisting. (FD60S).
 - AOV** Doors activated by the fire alarm system or in the event of power failure to work as Automatic Opening vent
 - DEL** Digital electronic lock door entry/exit system
 - GH13** Door/Access fitted with Gerda H13 Key lock.
 - GH36** Door/Access fitted with Gerda H36 Key lock.
 - FS** Fire alarm sounder. ('X' indicates integral flashing Xenon light.)
 - EL** Emergency light point.
- FIRE EXIT SIGNAGE**
- E** 'E' Signs to be externally illuminated by emergency light point.
 - FE** 'FE' denotes as previous but illuminated as part of sign.
 - RM** 'RM' denotes non illuminated sign
 - B** 1.1m x 1.1m fire blankets.
 - AF6** Base of fire blanket container to be 1500mm above floor level.
 - DP4.5** 6 litres AFFF aqueous foam extinguisher to BS-6575
 - W9** 9 litre wet chemical type extinguisher.
 - DP4.5** 4.5 litre dry powder type extinguisher.
 - W4.5** 4.5 kg carbon dioxide type extinguisher.
 - W9** 9 kg water type extinguisher.
 - FS** Firemans Switch
 - DKA** Emergency Drop Key Access
- Compartment Walls**
- SVC** Smoke Vent control panel
 - POV** Permanently Open Vent
 - PIB** Premises Information Box
 - CCTV** CCTV Security Camera
 - AOV** Automatic Opening Vent
 - A** AOV Override Switch
 - SPP** Sprinkler Control Panel
 - FL** Firefighters Lift
 - SSV** Sprinkler Stop Valve



Firntec Building Compliance | www.firntec.com | info@firntec.com | 01752 977 147
1st Floor, Endeavour House, 3 Parkway Court, Plymouth, PL6 8LR

Project Address

WEST VIEW COURT
WEST VIEW ROAD
NORTHENDEN
M22 4LQ

Client:

WYTHENSHAW COMMUNITY HOUSING GROUP

Scale:

1:100 @ A1

Date:

JAN 2023

Drawn by:

NR

Checked by:

NR

Drawing Title:

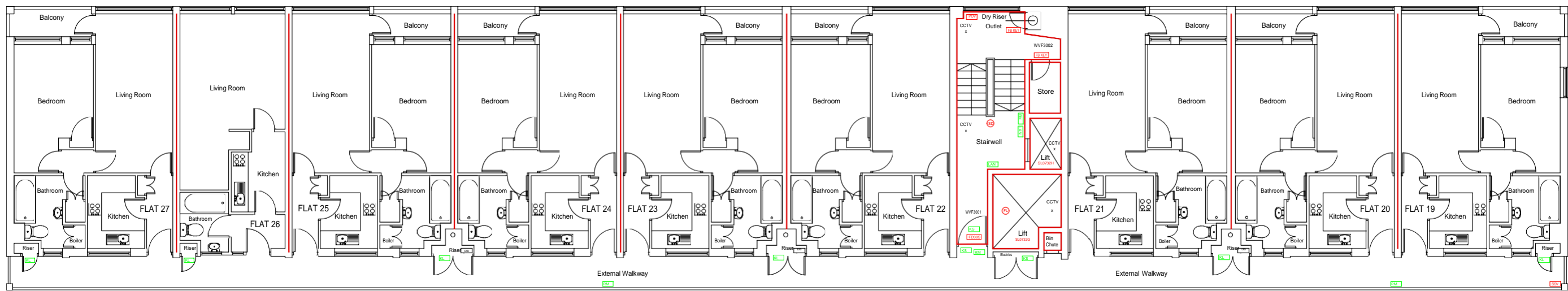
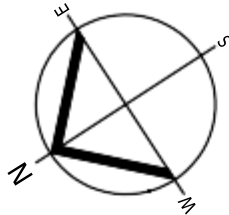
SECOND FLOOR PLAN

Drawing No:

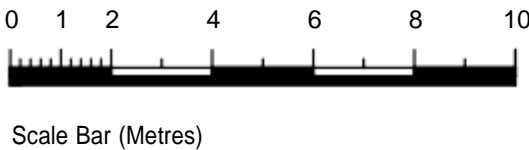
103 / 01 / 23

Revision

A



THIRD FLOOR



General Notes

Public areas were surveyed in the building.
Access to all the flats was not possible.

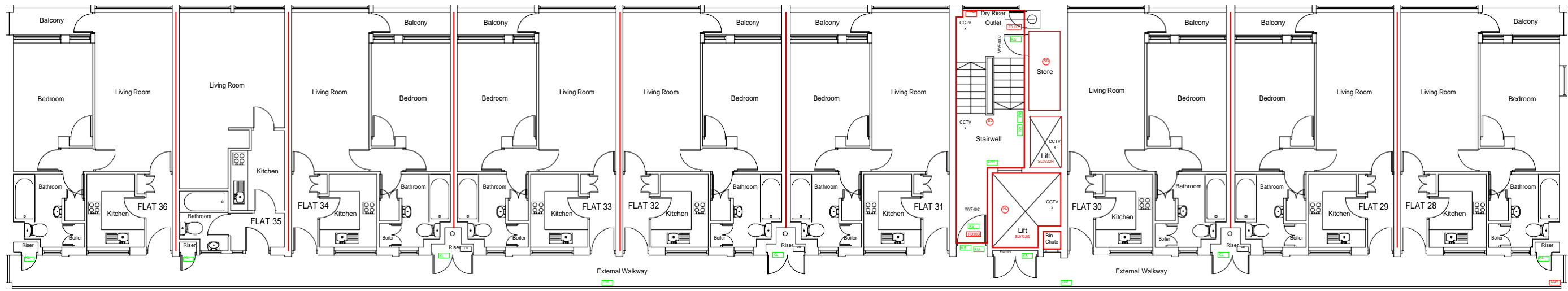
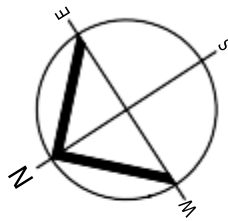
Footprint shown is assumed, the areas not surveyed cannot
be relied upon unless checked onsite for accuracy.

Plans are for illustration purposes only and should not be
relied upon for any works carried out or for area calculation
or building works.

- Key:
- FIRE DOOR SIGNS AND FIRE ACTION NOTICES**
- [FAN] Fire Action Notice
 - [KS] "FIRE DOOR KEEP SHUT" sign
 - [KL] "FIRE DOOR KEEP LOCKED" sign
 - [KC] "AUTOMATIC FIRE DOOR KEEP CLEAR" or "FIRE EXIT KEEP CLEAR" sign.
 - [LAN] "CAUTION, IN THE EVENT OF FIRE DO NOT USE THIS LIFT"
- FIRE PRECAUTIONS LEGEND**
- [C] Break glass type fire alarm call point.
 - [HD] Point type heat sensitive detectors.
 - [SD] Smoke sensitive detectors.
 - [SDR] Smoke detectors in roof space.
 - [SDR] Flashing Strobe indicator.
 - [FAP] Fire alarm indicator / repeat panel.
 - [EHO] Electromagnetic hold open devices
 - [FD20] 20 minute Fire resistant door (FD20).
 - [FED] Fire resistant flat entrance door.
 - [FD30S] Self-closing half-hour fire resisting door. (FD30S).
 - [FD60S] Self-closing one hour fire resisting. (FD60S).
 - [AOV] Doors activated by the fire alarm system or in the event of power failure to work as Automatic Opening vent
 - [DEL] Digital electronic lock door entry/exit system
 - [GH13] Door/Access fitted with Gerda H13 Key lock.
 - [GH36] Door/Access fitted with Gerda H36 Key lock.
 - [S] Fire alarm sounder. (X indicates integral flashing Xenon light.)
 - [EL] Emergency light point.
FIRE EXIT SIGNAGE
 - [E] 'E' Signs to be externally illuminated by emergency light point.
 - [FE] 'FE' denotes as previous but illuminated as part of sign.
 - [RM] 'RM' denotes non illuminated sign
 - [B] 1.1m x 1.1m fire blankets.
Base of fire blanket container to be 1500mm above floor level.
 - [AF6] 6 litres AFFF aqueous foam extinguisher to BS 6575
 - [C] 9 litre wet chemical type extinguisher.
 - [DP4.5] 4.5 litre dry powder type extinguisher.
 - [CO4.5] 4.5 kg carbon dioxide type extinguisher.
 - [W9] 9 kg water type extinguisher.
 - [FS] Firemans Switch
 - [DKA] Emergency Drop Key Access
 - COMPARTMENT WALLS**
 - [SVC] Smoke Vent control panel
 - [POV] Permanently Open Vent
 - [PIB] Premises Information Box
 - [CCTV] CCTV Security Camera
 - [AOV] Automatic Opening Vent
 - [A] AOV Override Switch
 - [SPP] Sprinkler Control Panel
 - [FL] Firefighters Lift
 - [SSV] Sprinkler Stop Valve

Fimtec Building Compliance | www.firntec.com | info@firntec.com | 01752 977 147
1st Floor, Endeavour House, 3 Parkway Court, Plymouth, PL6 8LR

Project Address WEST VIEW COURT WEST VIEW ROAD NORTHENDEN M22 4LQ			
Client: WYTHENSHAW COMMUNITY HOUSING GROUP			
Scale: 1:100 @ A1	Date: JAN 2023	Drawn by: NR	Checked by: NR
Drawing Title: THIRD FLOOR PLAN			
Drawing No: 104 / 01 / 23			Revision A



FOURTH FLOOR



Scale Bar (Metres)

General Notes

Public areas were surveyed in the building.
Access to all the flats was not possible.

Footprint shown is assumed, the areas not surveyed cannot
be relied upon unless checked onsite for accuracy.

Plans are for illustration purposes only and should not be
relied upon for any works carried out or for area calculation
or building works.

Key:

- FIRE DOOR SIGNS AND FIRE ACTION NOTICES**
- FAN** Fire Action Notice
 - KS** "FIRE DOOR KEEP SHUT" sign
 - KL** "FIRE DOOR KEEP LOCKED" sign
 - KC** "AUTOMATIC FIRE DOOR KEEP CLEAR" or "FIRE EXIT KEEP CLEAR" sign.
 - LAN** "CAUTION, IN THE EVENT OF FIRE DO NOT USE THIS LIFT"
- FIRE PRECAUTIONS LEGEND**
- B** Break glass type fire alarm call point.
 - HD** Point type heat sensitive detectors.
 - SD** Smoke sensitive detectors.
 - SDR** Smoke detectors in roof space.
 - SDI** Flashing Strobe indicator.
 - FAP** Fire alarm indicator / repeat panel.
 - HO** Electromagnetic hold open devices
 - FD20** 20 minute Fire resistant door (FD20).
 - FED** Fire resistant flat entrance door.
 - FD30S** Self-closing half-hour fire resisting door. (FD30S).
 - FD60S** Self-closing one hour fire resisting. (FD60S).
 - AOV** Doors activated by the fire alarm system or in the event of power failure to work as Automatic Opening vent
 - DEL** Digital electronic lock door entry/exit system
 - GH13** Door/Access fitted with Gerda H13 Key lock.
 - GH36** Door/Access fitted with Gerda H36 Key lock.
 - FL** Fire alarm sounder. ('X' indicates integral flashing Xenon light.)
 - EL** Emergency light point.
FIRE EXIT SIGNAGE
 - E** 'E' Signs to be externally illuminated by emergency light point.
 - FE** 'FE' denotes as previous but illuminated as part of sign.
 - RM** 'RM' denotes non illuminated sign
 - B** 1.1m x 1.1m fire blankets.
Base of fire blanket container to be 1500mm above floor level.
 - AF6** 6 litres AFFF aqueous foam extinguisher to BS:5575
 - C9** 9 litre wet chemical type extinguisher.
 - DP4.5** 4.5 litre dry powder type extinguisher.
 - CO4.5** 4.5 kg carbon dioxide type extinguisher.
 - W9** 9 kg water type extinguisher.
 - FS** Fireman's Switch
 - DKA** Emergency Drop Key Access
 - Compartment Walls**
 - SVC** Smoke Vent control panel
 - POV** Permanently Open Vent
 - PIB** Premises Information Box
 - CCTV** CCTV Security Camera
 - X** Automatic Opening Vent
 - AOV** AOV Override Switch
 - SPP** Sprinkler Control Panel
 - FL** Firefighters Lift
 - SSV** Sprinkler Stop Valve



Firntec Building Compliance | www.firntec.com | info@firntec.com | 01752 977 147
1st Floor, Endeavour House, 3 Parkway Court, Plymouth, PL6 8LR

Project Address

WEST VIEW COURT
WEST VIEW ROAD
NORTHENDEN
M22 4LQ

Client:

WYTHENSHAW COMMUNITY HOUSING GROUP

Scale:

1:100 @ A1

Date:

JAN 2023

Drawn by:

NR

Checked by:

NR

Drawing Title:

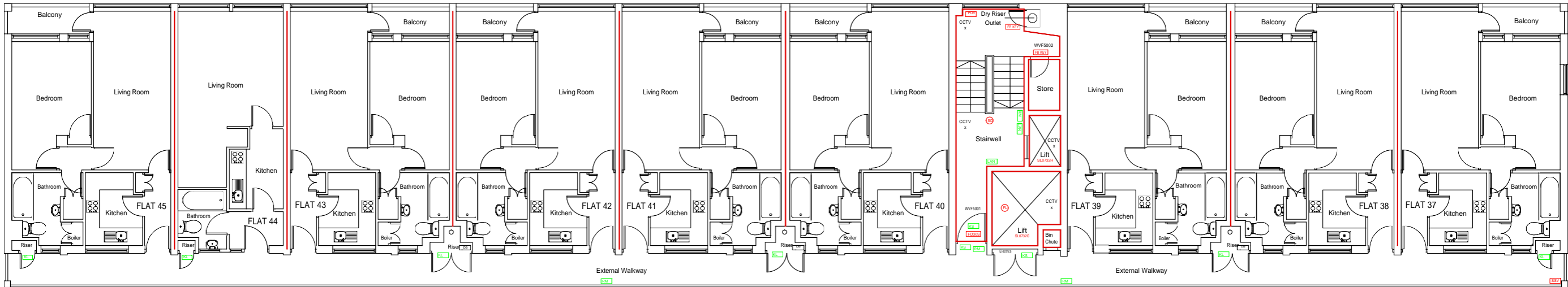
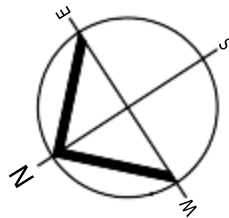
FOURTH FLOOR PLAN

Drawing No:

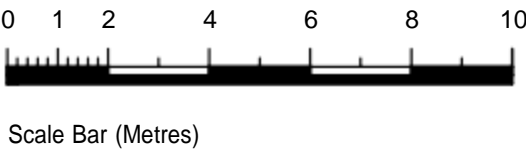
105 / 01 / 23

Revision

A



FIFTH FLOOR



General Notes

Public areas were surveyed in the building.
Access to all the flats was not possible.

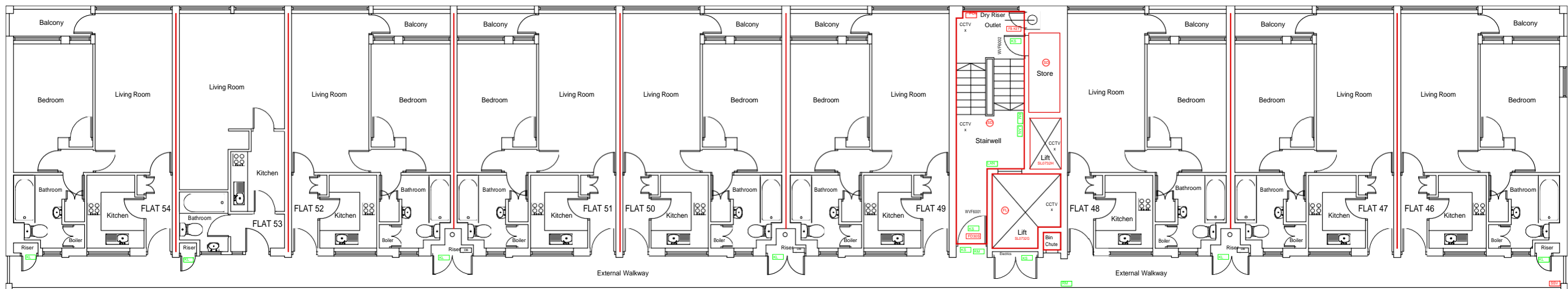
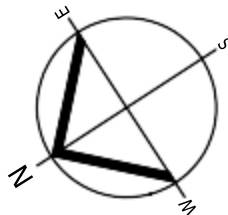
Footprint shown is assumed, the areas not surveyed cannot be relied upon unless checked onsite for accuracy.

Plans are for illustration purposes only and should not be relied upon for any works carried out or for area calculation or building works.

- Key:**
- FIRE DOOR SIGNS AND FIRE ACTION NOTICES**
- [FAN] Fire Action Notice
 - [KS] "FIRE DOOR KEEP SHUT" sign
 - [KL] "FIRE DOOR KEEP LOCKED" sign
 - [KC] "AUTOMATIC FIRE DOOR KEEP CLEAR" or "FIRE EXIT KEEP CLEAR" sign.
 - [LAN] "CAUTION, IN THE EVENT OF FIRE DO NOT USE THIS LIFT"
- FIRE PRECAUTIONS LEGEND**
- [GAP] Break glass type fire alarm call point.
 - [HD] Point type heat sensitive detectors.
 - [SD] Smoke sensitive detectors.
 - [SDR] Smoke detectors in roof space.
 - [SDI] Flashing Strobe indicator.
 - [FAP] Fire alarm indicator / repeat panel.
 - [HOP] Electromagnetic hold open devices
 - [FD20] 20 minute Fire resistant door (FD20).
 - [FED] Fire resistant flat entrance door.
 - [FD30S] Self-closing half-hour fire resisting door. (FD30S).
 - [FD60S] Self-closing one hour fire resisting. (FD60S).
 - [AOV] Doors activated by the fire alarm system or in the event of power failure to work as Automatic Opening Vent
 - [DEL] Digital electronic lock door entry/exit system
 - [GH13] Door/Access fitted with Gerda H13 Key lock.
 - [GH36] Door/Access fitted with Gerda H36 Key lock.
 - [S] Fire alarm sounder. ('X' indicates integral flashing Xenon light.)
 - [EL] Emergency light point.
FIRE EXIT SIGNAGE
 - [E] 'E' Signs to be externally illuminated by emergency light point.
 - [FE] 'FE' denotes as previous but illuminated as part of sign.
 - [RM] 'RM' denotes non illuminated sign
 - [B] 1.1m x 1.1m fire blankets.
Base of fire blanket container to be 1500mm above floor level.
 - [AFV] 6 litres AFFF aqueous foam extinguisher to BS 6575
 - [EX] 9 litre wet chemical type extinguisher.
 - [EX] 4.5 litre dry powder type extinguisher.
 - [EX] 4.5 kg carbon dioxide type extinguisher.
 - [EX] 9 kg water type extinguisher.
 - [FS] Firemans Switch
 - [DKA] Emergency Drop Key Access
 - Compartment Walls**
 - [SVC] Smoke Vent control panel
 - [POV] Permanently Open Vent
 - [PIB] Premises Information Box
 - [CCTV] CCTV Security Camera
 - [AOV] Automatic Opening Vent
 - [A] AOV Override Switch
 - [SPP] Sprinkler Control Panel
 - [FL] Firefighters Lift
 - [SSV] Sprinkler Stop Valve

Firntec Building Compliance | www.firntec.com | info@firntec.com | 01752 977 147
1st Floor, Endeavour House, 3 Parkway Court, Plymouth, PL6 8LR

Project Address			
WEST VIEW COURT WEST VIEW ROAD NORTHENDEN M22 4LQ			
Client:			
WYTHENSHAW COMMUNITY HOUSING GROUP			
Scale:	Date:	Drawn by:	Checked by:
1:100 @ A1	JAN 2023	NR	NR
Drawing Title:			
FIFTH FLOOR PLAN			
Drawing No:			Revision
106 / 01 / 23			A



SIXTH FLOOR



Scale Bar (Metres)

General Notes

Public areas were surveyed in the building.
Access to all the flats was not possible.

Footprint shown is assumed, the areas not surveyed cannot
be relied upon unless checked onsite for accuracy.

Plans are for illustration purposes only and should not be
relied upon for any works carried out or for area calculation
or building works.

Key:

- FIRE DOOR SIGNS AND FIRE ACTION NOTICES**
- FAN** Fire Action Notice
 - KS** *FIRE DOOR KEEP SHUT* sign
 - KL** *FIRE DOOR KEEP LOCKED* sign
 - KC** *AUTOMATIC FIRE DOOR KEEP CLEAR* or *FIRE EXIT KEEP CLEAR* sign.
 - LAN** *CAUTION, IN THE EVENT OF FIRE DO NOT USE THIS LIFT*
- FIRE PRECAUTIONS LEGEND**
- BD** Break glass type fire alarm call point.
 - HD** Point type heat sensitive detectors.
 - SD** Smoke sensitive detectors.
 - SDR** Smoke detectors in roof space.
 - SDI** Flashing Strobe indicator.
 - FAP** Fire alarm indicator / repeat panel.
 - HO** Electromagnetic hold open devices
 - FD20** 20 minute Fire resistant door (FD20).
 - FED** Fire resistant flat entrance door.
 - FD30S** Self-closing half-hour fire resisting door. (FD30S).
 - FD60S** Self-closing one hour fire resisting. (FD60S).
 - AOV** Doors activated by the fire alarm system or in the event of power failure to work as Automatic Opening vent
 - DEL** Digital electronic lock door entry/exit system
 - GH13** Door/Access fitted with Gerda H13 Key lock.
 - GH36** Door/Access fitted with Gerda H36 Key lock.
 - FS** Fire alarm sounder. ('X' indicates integral flashing Xenon light.)
 - EL** Emergency light point.
 - FIRE EXIT SIGNAGE**
 - E** 'E' Signs to be externally illuminated by emergency light point.
 - FE** 'FE' denotes as previous but illuminated as part of sign.
 - RM** 'RM' denotes non illuminated sign
 - B** 1.1m x 1.1m fire blankets.
 - AF6** 6 litres AFFF aqueous foam extinguisher to BS-5575
 - CF** 9 litre wet chemical type extinguisher.
 - DP4.5** 4.5 litre dry powder type extinguisher.
 - CD4.5** 4.5 kg carbon dioxide type extinguisher.
 - W9** 9 kg water type extinguisher.
 - FS** Firemans Switch
 - DKA** Emergency Drop Key Access
 - SVC** Compartment Walls
 - POV** Smoke Vent control panel
 - PIB** Permanently Open Vent
 - PIB** Premises Information Box
 - CCTV** CCTV Security Camera
 - X** Automatic Opening Vent
 - A** AOV Override Switch
 - SPP** Sprinkler Control Panel
 - FL** Firefighters Lift
 - SSV** Sprinkler Stop Valve



Firntec Building Compliance | www.firntec.com | info@firntec.com | 01752 977 147
1st Floor, Endeavour House, 3 Parkway Court, Plymouth, PL6 8LR

Project Address

WEST VIEW COURT
WEST VIEW ROAD
NORTHENDEN
M22 4LQ

Client:

WYTHENSHAW COMMUNITY HOUSING GROUP

Scale:

1:100 @ A1

Date:

JAN 2023

Drawn by:

NR

Checked by:

NR

Drawing Title:

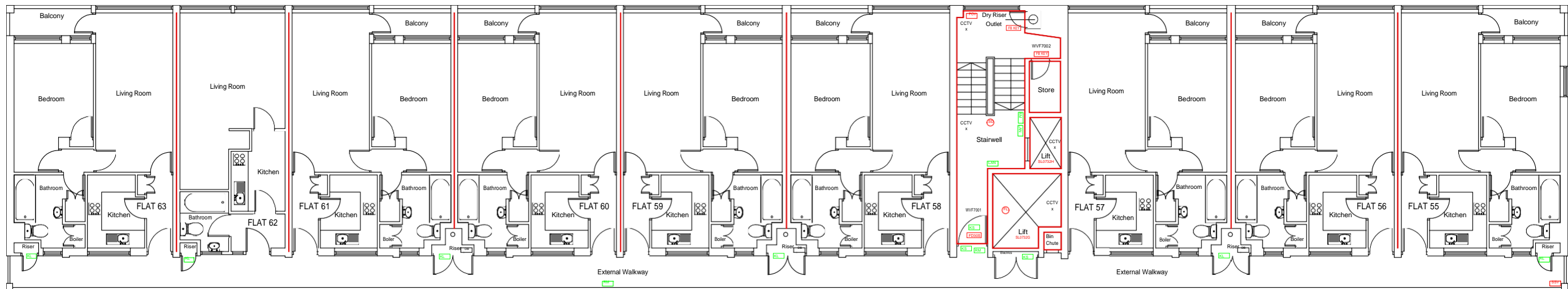
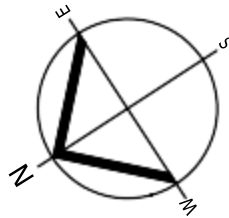
SIXTH FLOOR PLAN

Drawing No:

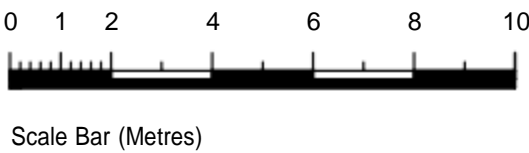
107 / 01 / 23

Revision

A



SEVENTH FLOOR



General Notes

Public areas were surveyed in the building.
Access to all the flats was not possible.

Footprint shown is assumed, the areas not surveyed cannot
be relied upon unless checked onsite for accuracy.

Plans are for illustration purposes only and should not be
relied upon for any works carried out or for area calculation
or building works.

Key:

- FIRE DOOR SIGNS AND FIRE ACTION NOTICES**
- FAN** Fire Action Notice
 - KS** "FIRE DOOR KEEP SHUT" sign
 - KL** "FIRE DOOR KEEP LOCKED" sign
 - KC** "AUTOMATIC FIRE DOOR KEEP CLEAR" or "FIRE EXIT KEEP CLEAR" sign.
 - LAN** "CAUTION, IN THE EVENT OF FIRE DO NOT USE THIS LIFT"
- FIRE PRECAUTIONS LEGEND**
- ☼** Break glass type fire alarm call point.
 - HD** Point type heat sensitive detectors.
 - SD** Smoke sensitive detectors.
 - SDR** Smoke detectors in roof space.
 - SDR** Flashing Strobe indicator.
 - FAP** Fire alarm indicator / repeat panel.
 - Electromagnetic hold open devices
 - FD20** 20 minute Fire resistant door (FD20).
 - FED** Fire resistant flat entrance door.
 - FD30S** Self-closing half-hour fire resisting door. (FD30S).
 - FD60S** Self-closing one hour fire resisting. (FD60S).
 - AOV** Doors activated by the fire alarm system or in the event of power failure to work as Automatic Opening vent
 - DEL** Digital electronic lock door entry/exit system
 - GH13** Door/Access fitted with Gerda H13 Key lock.
 - GH36** Door/Access fitted with Gerda H36 Key lock.
 - FL** Fire alarm sounder. ('X' indicates integral flashing Xenon light.)
 - EL** Emergency light point.
 - EL** FIRE EXIT SIGNAGE
 - E** 'E' Signs to be externally illuminated by emergency light point.
 - FE** 'FE' denotes as previous but illuminated as part of sign.
 - RM** 'RM' denotes non illuminated sign
 - B** 1.1m x 1.1m fire blankets.
 - AF6** 6 litres AFFF aqueous foam extinguisher to BS.6575
 - WC9** 9 litre wet chemical type extinguisher.
 - DP4.5** 4.5 litre dry powder type extinguisher.
 - CC4.5** 4.5 kg carbon dioxide type extinguisher.
 - WC9** 9 kg water type extinguisher.
 - FS** Firemans Switch
 - DKA** Emergency Drop Key Access
 - Compartment Walls**
 - SVC** Smoke Vent control panel
 - POV** Permanently Open Vent
 - PIB** Premises Information Box
 - CCTV** CCTV Security Camera
 - AOV** Automatic Opening Vent
 - AOV** AOV Override Switch
 - SPP** Sprinkler Control Panel
 - FL** Firefighters Lift
 - SSV** Sprinkler Stop Valve



Firntec Building Compliance | www.firntec.com | info@firntec.com | 01752 977 147
1st Floor, Endeavour House, 3 Parkway Court, Plymouth, PL6 8LR

Project Address

WEST VIEW COURT
WEST VIEW ROAD
NORTHENDEN
M22 4LQ

Client:

WYTHENSHAW COMMUNITY HOUSING GROUP

Scale:

1:100 @ A1

Date:

JAN 2023

Drawn by:

NR

Checked by:

NR

Drawing Title:

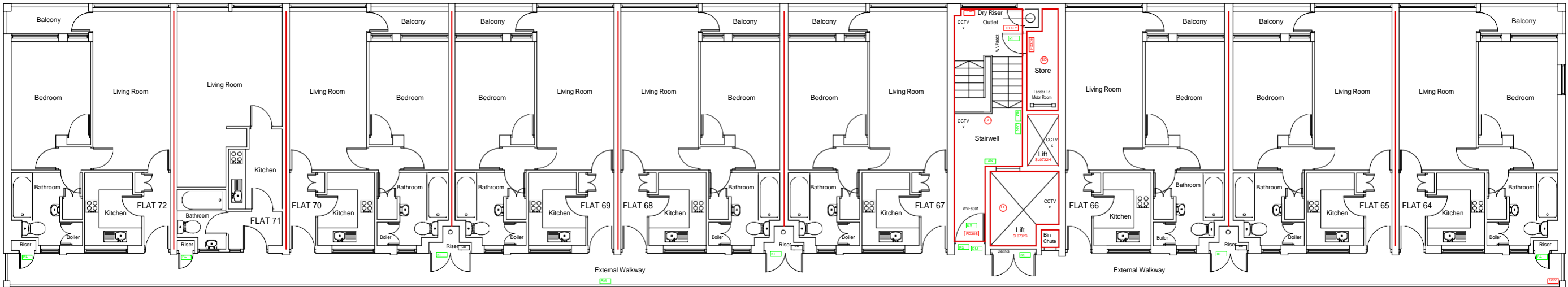
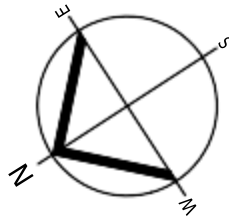
SEVENTH FLOOR PLAN

Drawing No:

108 / 01 / 23

Revision

A



EIGHTH FLOOR

0 1 2 4 6 8 10



Scale Bar (Metres)

General Notes

Public areas were surveyed in the building.
Access to all the flats was not possible.

Footprint shown is assumed, the areas not surveyed cannot
be relied upon unless checked onsite for accuracy.

Plans are for illustration purposes only and should not be
relied upon for any works carried out or for area calculation
or building works.

Key:

FIRE DOOR SIGNS AND FIRE ACTION NOTICES

- FAN** Fire Action Notice
- KS** "FIRE DOOR KEEP SHUT" sign
- KL** "FIRE DOOR KEEP LOCKED" sign
- KC** "AUTOMATIC FIRE DOOR KEEP CLEAR" or
"FIRE EXIT KEEP CLEAR" sign.
- LAN** "CAUTION, IN THE EVENT OF
FIRE DO NOT USE THIS LIFT"

FIRE PRECAUTIONS LEGEND

- ⊙** Break glass type fire alarm call point.
- HD** Point type heat sensitive detectors.
- SD** Smoke sensitive detectors.
- SDR** Smoke detectors in roof space.
- ⬇** Flashing Strobe indicator.
- FAP** Fire alarm indicator / repeat panel.
- Electromagnetic hold open devices
- FD20** 20 minute Fire resistant door (FD20).
- FED** Fire resistant flat entrance door.
- FD30S** Self-closing half-hour fire resisting door. (FD30S).
- FD60S** Self-closing one hour fire resisting. (FD60S).
- AOV** Doors activated by the fire alarm system or in
the event of power failure to work as Automatic Opening vent
- DEL** Digital electronic lock door entry/exit system
- GH13** Door/Access fitted with Gerda H13 Key lock.
- GH38** Door/Access fitted with Gerda H38 Key lock.
- ⚡** Fire alarm sounder. (X indicates integral flashing Xenon light.)
- ⊕** Emergency light point.
- FIRE EXIT SIGNAGE**
 - E** 'E' Signs to be externally illuminated by emergency light point.
 - FE** 'FE' denotes as previous but illuminated as part of sign.
 - RM** 'RM' denotes non illuminated sign
- B** 1.1m x 1.1m fire blankets.
Base of fire blanket container to be 1500mm above floor level.
- AF6** 6 litres AFFF aqueous foam extinguisher to BS:6575
- DP9** 9 litre wet chemical type extinguisher.
- DP4.5** 4.5 litre dry powder type extinguisher.
- CO4.5** 4.5 kg carbon dioxide type extinguisher.
- W9** 9 kg water type extinguisher.
- FS** Firemans Switch
- DKA** Emergency Drop Key Access
- Compartment Walls**
 - SVC** Smoke Vent control panel
 - POV** Permanently Open Vent
 - PIB** Premises Information Box
 - CCTV x** CCTV Security Camera
 - AOV** Automatic Opening Vent
 - A** AOV Override Switch
 - SPP** Sprinkler Control Panel
 - FL** Firefighters Lift
 - SSV** Sprinkler Stop Valve



Firntec Building Compliance | www.firntec.com | info@firntec.com | 01752 977 147
1st Floor, Endeavour House, 3 Parkway Court, Plymouth, PL6 8LR

Project Address

WEST VIEW COURT
WEST VIEW ROAD
NORTHENDEN
M22 4LQ

Client:

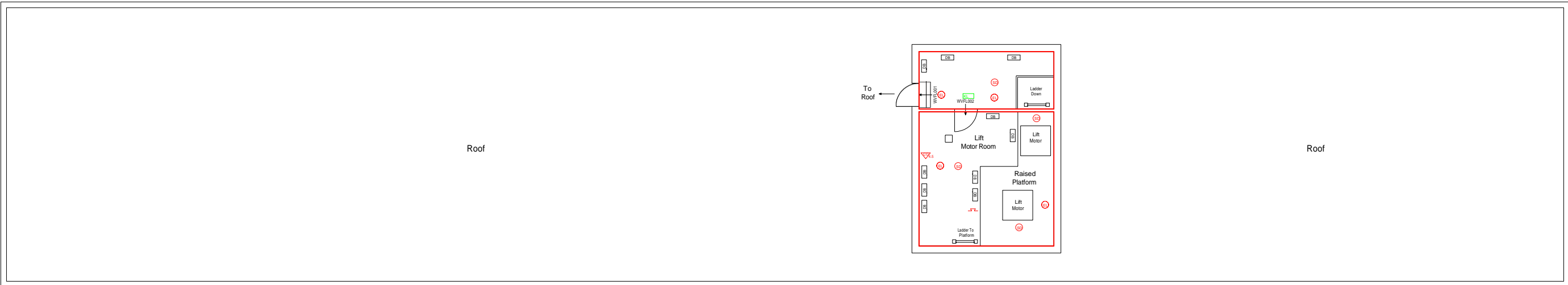
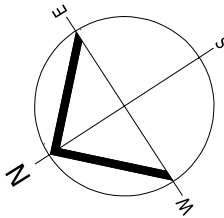
WYTHENSHAW COMMUNITY HOUSING GROUP

Scale: 1:100 @ A1	Date: JAN 2023	Drawn by: NR	Checked by: NR
----------------------	-------------------	-----------------	-------------------

Drawing Title:

EIGHTH FLOOR PLAN

Drawing No: 109 / 01 / 23	Revision A
------------------------------	---------------



LOFT

0 1 2 4 6 8 10



Scale Bar (Metres)

General Notes

Public areas were surveyed in the building.
Access to all the flats was not possible.

Footprint shown is assumed, the areas not surveyed cannot
be relied upon unless checked onsite for accuracy.

Plans are for illustration purposes only and should not be
relied upon for any works carried out or for area calculation
or building works.

Key:

FIRE DOOR SIGNS AND FIRE ACTION NOTICES	
FAN	Fire Action Notice
KS	*FIRE DOOR KEEP SHUT* sign
KL	*FIRE DOOR KEEP LOCKED* sign
KC	*AUTOMATIC FIRE DOOR KEEP CLEAR* or *FIRE EXIT KEEP CLEAR* sign.
LAN	*CAUTION, IN THE EVENT OF FIRE DO NOT USE THIS LIFT*
FIRE PRECAUTIONS LEGEND	
O	Break glass type fire alarm call point.
HD	Point type heat sensitive detectors.
SD	Smoke sensitive detectors.
SDR	Smoke detectors in roof space.
▲	Flashing Strobe indicator.
FAP	Fire alarm indicator / repeat panel.
□	Electromagnetic hold open devices
FD20	20 minute Fire resistant door (FD20).
FED	Fire resistant flat entrance door.
FD30S	Self-closing half-hour fire resisting door. (FD30S).
FD60S	Self-closing one hour fire resisting. (FD60S).
AOV	Doors activated by the fire alarm system or in the event of power failure to work as Automatic Opening vent
DEL	Digital electronic lock door entry/exit system
GH13	Door/Access fitted with Gerda H13 Key lock.
GH36	Door/Access fitted with Gerda H36 Key lock.
S	Fire alarm sounder. ('X' indicates integral flashing Xenon light.)
EL	Emergency light point.
FIRE EXIT SIGNAGE	
E	'E' Signs to be externally illuminated by emergency light point.
FE	'FE' denotes as previous but illuminated as part of sign.
RM	'RM' denotes non illuminated sign
B	1.1m x 1.1m fire blankets. Base of fire blanket container to be 1500mm above floor level.
AF 6	6 litres AFFF aqueous foam extinguisher to BS.6575
C 4	9 litre wet chemical type extinguisher.
DP 4.5	4.5 litre dry powder type extinguisher.
W 4.5	4.5 kg carbon dioxide type extinguisher.
W 4	9 kg water type extinguisher.
FS	Firemans Switch
DKA	Emergency Drop Key Access
Compartment Walls	
SVC	Smoke Vent control panel
POV	Permanently Open Vent
PIB	Premises Information Box
CCTV	CCTV Security Camera
X	CCTV Security Camera
AOV	Automatic Opening Vent
A	AOV Override Switch
SPP	Sprinkler Control Panel
FL	Firefighters Lift
SSV	Sprinkler Stop Valve



Firntec Building Compliance | www.firntec.com | info@firntec.com | 01752 977 147
1st Floor, Endeavour House, 3 Parkway Court, Plymouth, PL6 8LR

Project Address

WEST VIEW COURT
WEST VIEW ROAD
NORTHENDEN
M22 4LQ

Client:

WYTHENSHAW COMMUNITY HOUSING GROUP

Scale:

1:100 @ A1

Date:

JAN 2023

Drawn by:

NR

Checked by:

NR

Drawing Title:

LOFT FLOOR PLAN

Drawing No:

110 / 01 / 23

Revision

A